

MV-CE100-31GM

10 MP 1/2.3" CMOS GigE Area Scan Camera



GEN<i>i</i>CAM

GIG<i>E</i>
VISION

Introduction

MV-CE100-31GM camera is a high quality device that can be used in a variety of applications, including electronic semiconductor fabrication, factory automation, quality inspection.

Key Feature

- Adopts GigE interface and max. transmission distance of 100 meters without relay.
- Up to 128 MB local memory for burst transmission and retransmission.
- Supports auto exposure control, LUT, Gamma correction, etc.
- Supports hardware trigger, software trigger, etc.
- Compatible with GigE Vision V1.2 Protocol, GenICam Standard, and third-party software based on the protocol and standard.

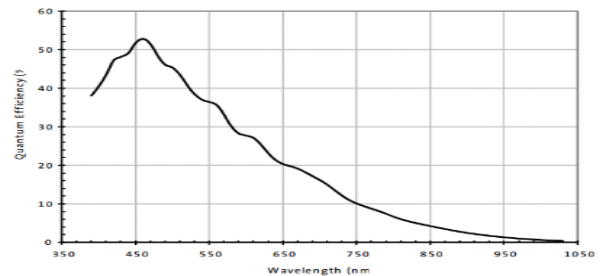
Available Model

Mono camera: MV-CE100-31GM

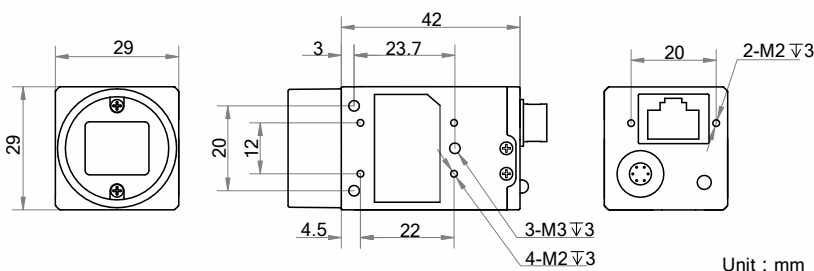
Applicable Industry

Electronic semiconductor, factory automation, quality inspection, etc.

Sensor Quantum Efficiency



Dimension



Specification

| | |
|----------------------------|---|
| Model | MV-CE100-31GM |
| Camera | |
| Sensor type | CMOS, rolling shutter |
| Sensor model | MT9J003 |
| Pixel size | 1.67 μm \times 1.67 μm |
| Sensor size | 1/2.3" |
| Resolution | 3840 \times 2748 |
| Max. frame rate | 11.2 fps @3840 \times 2748 |
| Dynamic range | 65 dB |
| SNR | 34 dB |
| Gain | 0 dB to 15.3 dB |
| Exposure time | 26 μs to 1 s |
| Exposure mode | Off/Once/Continuous exposure mode |
| Mono/color | Mono |
| Pixel format | Mono 8/10/10p/12/12p |
| Binning | Supports 1 \times 1, 2 \times 2 |
| Decimation | Not support |
| Reverse image | Supports horizontal reverse image output |
| Image buffer | 128 MB |
| Electrical features | |
| Data interface | Gigabit Ethernet |
| Digital I/O | 6-pin Hirose connector provides power and I/O, including opto-isolated input \times 1 (Line 0), opto-isolated output \times 1 (Line 1), bi-directional non-isolated I/O \times 1 (Line 2). |
| Power supply | 12 VDC, supports PoE |
| Power consumption | Typ. 2.6 W@12 VDC |
| Structure | |
| Lens mount | C-Mount |
| Dimension | 29 mm \times 29 mm \times 42 mm (1.1" \times 1.1" \times 1.7") |
| Weight | Approx. 68 g (0.15 lb.) |
| Ingress protection | IP30 (under proper lens installation and wiring) |
| Temperature | Working temperature: 0 $^{\circ}\text{C}$ to 50 $^{\circ}\text{C}$ (32 $^{\circ}\text{F}$ to 122 $^{\circ}\text{F}$) Storage temperature: -30 $^{\circ}\text{C}$ to 70 $^{\circ}\text{C}$ (-22 $^{\circ}\text{F}$ to 158 $^{\circ}\text{F}$) |
| Humidity | 20% to 80% RH, non-condensing |
| General | |
| Client software | MVS or third-party software meeting with GigE Vision Protocol |
| Operating system | 32/64-bit Windows XP/7/10, 32/64-bit Linux and 64-bit MacOS |
| Compatibility | GigE Vision V1.2, GenICam |
| Certification | CE, FCC, RoHS, KC |

HIKROBOT

Hangzhou Hikrobot Technology Co., Ltd.
No.399 Danfeng Road, Binjiang District, Hangzhou 310051, China.
en.hikrobotics.com

Copyright Hikrobot

Hangzhou Hikrobot Technology Co., Ltd. All Rights Reserved. Hangzhou Hikrobot Technology does not tolerate any infringement. Any organization or individual may not imitate or reproduce in whole or in part of the content. The data herein is based on Hikrobot's internal evaluation. Actual data may vary depending on specific configuration and operating condition. The information herein is subject to change without notice All the content has been checked conscientiously. Nevertheless, Hikrobot shall not be liable to damages resulting from errors, inconsistencies or omissions.